



build | integrate | secure

Building Solutions with SharePoint Technologies

March 15th, 2006

Overview

- SharePoint Introduction
 - *Web Parts & Content Sources*
 - *Windows SharePoint Services*
 - *SharePoint Portal Server 2003*
- Value Creation Potential
- Case Study: North American Development Bank
- Questions

Introduction to the SharePoint Platform

- Allows organizations to easily create, manage and distribute collaborative solutions
- Integrates with many Microsoft technologies:
 - *Active Directory*
 - *InfoPath*
 - *Exchange*
 - *Office platform*
 - *BizTalk Server*
- Highly scalable
- Rich security model
- Granular administration capabilities
- Functional as both an intranet and extranet

Web Parts and Content Sources

- Content Sources
 - *Data stores*
 - *Administrable views of content*
 - *Secured on multiple levels*
- Web Parts
 - *Modular unit of information consisting of a title, menu options, and content*
 - *Views of content sources*
 - *Based on .NET Web Custom Controls*
 - *Audience targeting enabled*
 - *Connects to other web parts*
 - *Web-based administration and customization*

Windows SharePoint Services

Windows SharePoint Services (WSS) allows businesses project- and team-based collaboration leveraging the .NET framework to create interactive information repositories.

- Standard Features
 - *Content Sources*
 - Libraries, Lists, Surveys, etc.
 - *Email-based Alerts*
 - *8 Pre-built Site Templates*
- Ad-hoc hierarchies via sub-sites
- Tailored security settings
- 'Access-request' Oriented



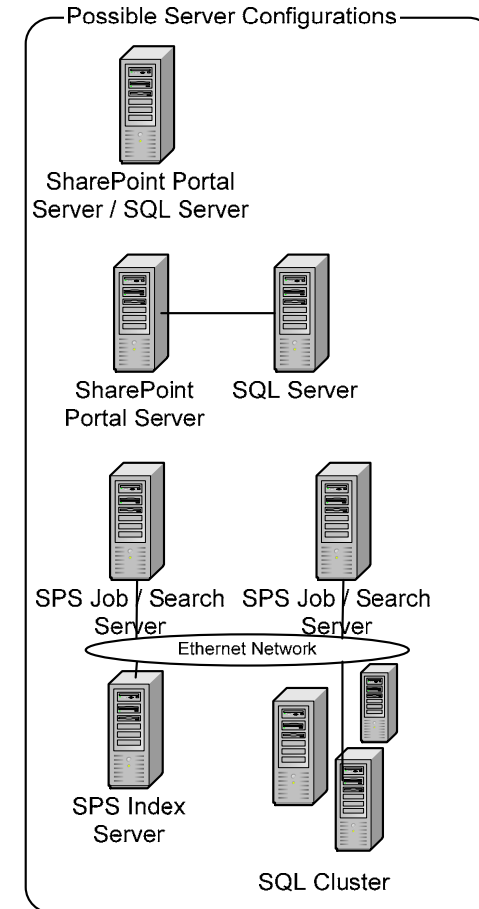
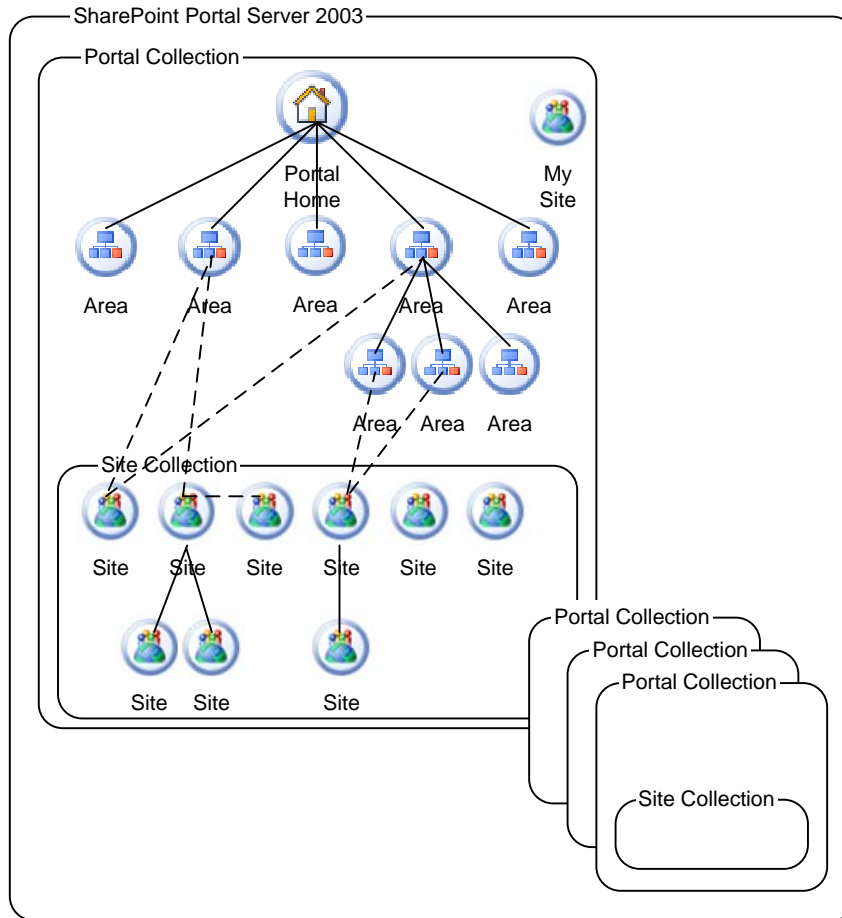
SharePoint Portal Server 2003

SharePoint Portal Server 2003 (SPS) integrates all aspects of a business to create a secure, scalable enterprise portal for data management, collaboration, information targeting, and advanced searching both internally to SPS and externally.

- Standard Features
 - *6 Pre-built Area Templates*
 - *Personal Sites (My Site)*
 - *Site Directory*
 - *Single Sign-on Service (SSO)*
 - *Audience Targeting*
- Highly Structured Hierarchy
- Complete WSS Feature Set
- 'Pertinent-access' Oriented



SharePoint Hierarchy



Value Creation Potential

- Collaboration
 - *Document Libraries*
 - *Project Workspaces*
 - *Discussion Lists*
- Business Portal
 - *Business Dashboard*
 - *Single Sign On*
- Information Management
 - *Searching*
 - *Content Targeting*
- 3rd Party Application Set

North American Development Bank Case Study



NADB: Organization Profile

- Created in part by the North American Free Trade Agreement (NAFTA)
- Jointly funded by the United States and Mexico
- Addresses environmental issues in the border area between the United States and Mexico
- Provides loans to projects with an environmental impact in the US/Mexican border region

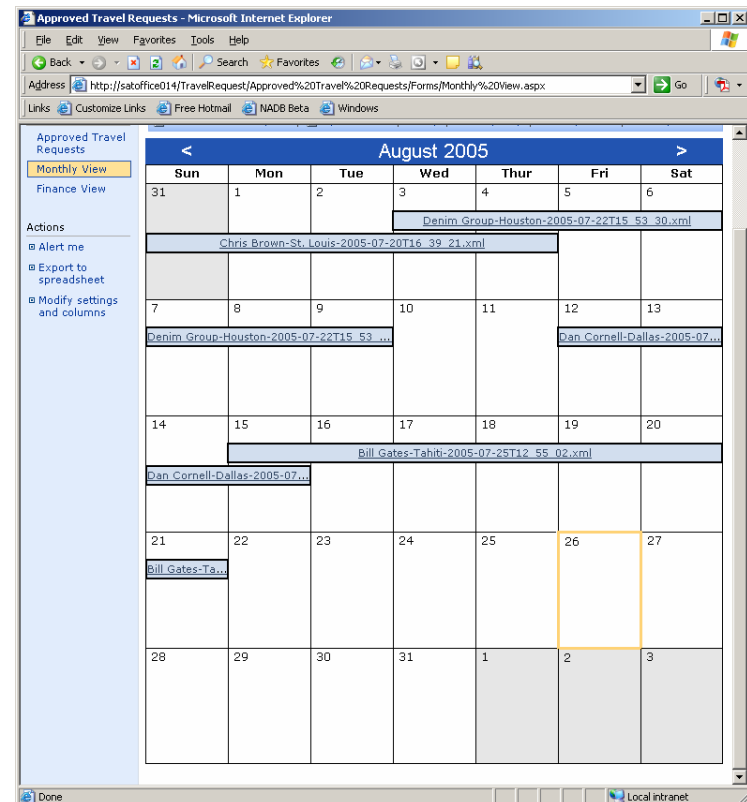
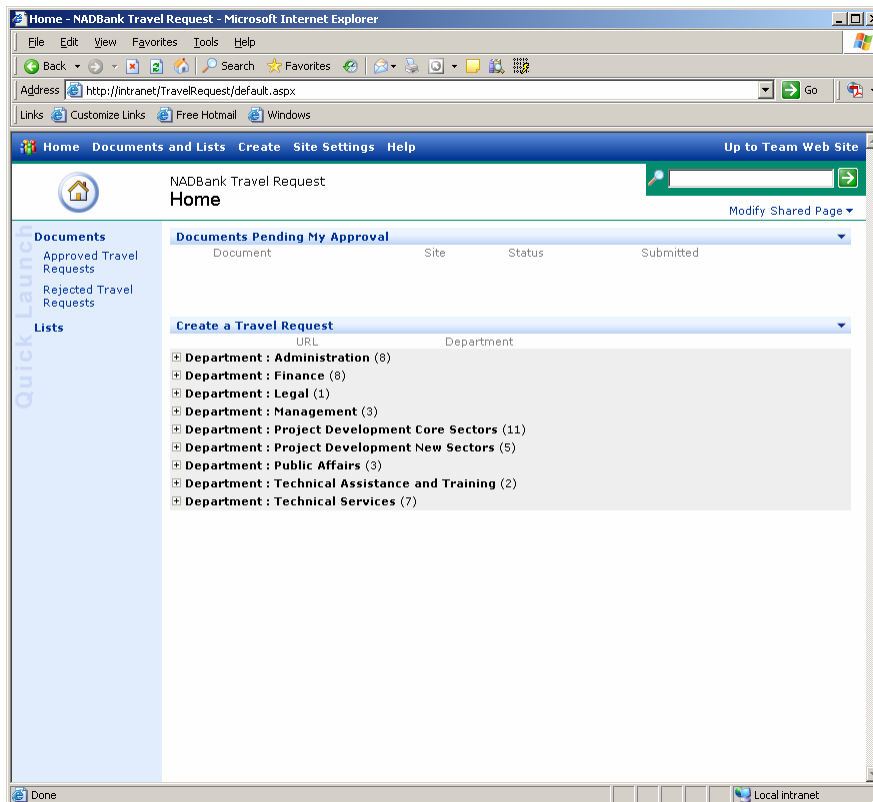
NADB: Business Challenge

- Employee travel is integral to the NADB mission
- Paper-based process for submitting and approving travel requests, travel reports and expense reports
- Multiple levels of approval required
- Manual processes were prone to error and placed a tremendous burden on managers

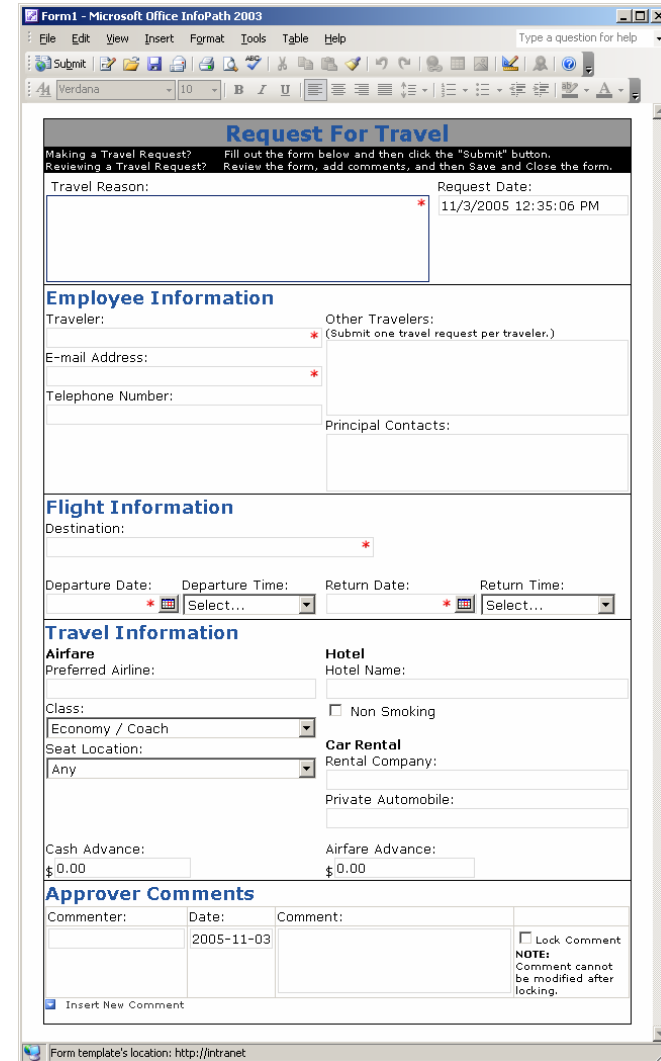
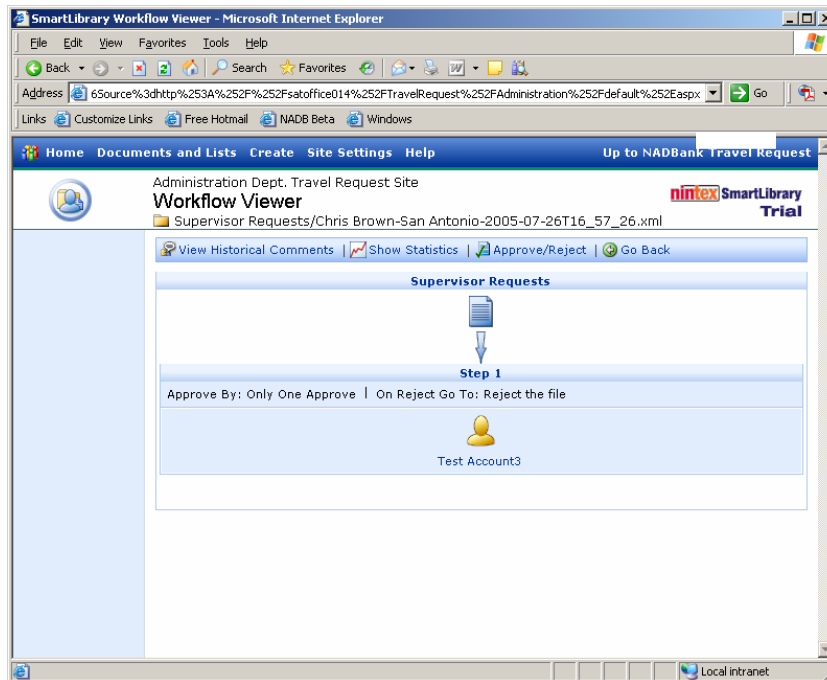
NADB: Solution

- Create an online workflow system for the request and approval of travel requests
- Microsoft SharePoint technologies selected as the platform
 - *Collaboration infrastructure*
 - *Future use of other features*
- Microsoft InfoPath used to create forms submitting data to the system
- Microsoft Active Directory used to seed user accounts
- 3rd party workflow solution used for multi-step approvals

NADB: Screen Shots



NADB: Screen Shots (cont.)



Questions?

Denim Group, Ltd

(210) 572-4400

<http://www.denimgroup.com/>

Dan Cornell, MCSD – dan@denimgroup.com